

P-M

RING TONGUE TERMINAL, PRE-INSULATED WITH POLYCARBONATE, FOR COPPER CONDUCTORS, HALOGEN FREE



CERTIFICATIONS & APPROVALS



Features

TECHNICAL INFORMATION

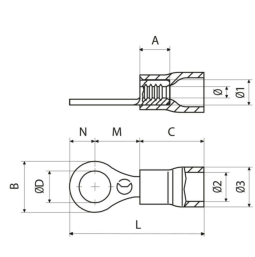
Minimum operating temperature	-20 °C
Maximum operating temperature	115 °C
Threshold of operating temperature for short periods	130 °C
Spy hole	No
Narrow connection	No
Bend angle of the connection	0 °
Number of holes on the palm	1
Barrel reinforcement ring	No
Markings found	marchio di fabbrica
Reference standard	UL 486A-486B
Typology	singolo
Type of insulation	parziale
Easy insertion input	Yes
Self-extinguishing fire class according to UL 94	V0
Reinforced with anti-vibration collar	No

WEIGHT AND DIMENSIONS

Centre distance between holes	0 mm
-------------------------------	------

CLASSIFICATION AND DATA ORDERING

ETIM Class 7	Solderless copper terminals for copper conductors [EC001052]
--------------	--



MATERIAL COMPOSITION AND TREATMENTS

Conductor body material	Electrolytic copper with purity above 99,95%
Minimum thickness of the surface coating of the conducting body	3 µm
Surface treatment of the conductor body	tin plating
Insulated cover material	Polycarbonate PC10500AC
Annealing	Yes
Internal surface of the barrel	knurled
Halogen free	Yes

LOGISTIC

Type of packaging	; box
Unit in minimal packaging	100 PCE
Minimum order quantity	100 PCE
Customs code	85369010

VP-M		Insulated cover colour Green		Range of cable cross section 0.2 ÷ 0.5 mm²											
tipo	Screw diameter	ØD [mm]	B [mm]	N [mm]	M [mm]	I [mm]	L [mm]	Gross weight [g]	A [mm]	C [mm]	Ø2 [mm]	Ø3 [mm]	Ø [mm]	Cable stripping length [mm]	Unit in standard packaging [pce]
VP-M2	M2	2.2	5.6	2.8	4.5	8.7	17.5		4.6	10	3	4.4	1.2	4.6	4,000
VP-M3	M3	3.2	5.6	2.8	4.5	8.7	17.5	0,367	4.6	10	3	4.4	1.2	4.6	4,000
VP-M3.5	M3.5	3.7	5.6	2.8	4.5	8.7	17.5	0,325	4.6	10	3	4.4	1.2	4.6	4,000
VP-M4	M4	4.3	7	3.5	6.5	10.7	20.2	0,415	4.6	10	3	4.4	1.2	4.6	4,000
VP-M5	M5	5.3	7.8	3.9	7.1	11.3	21.2	0,401	4.6	10	3	4.4	1.2	4.6	4,000
VP-M6	M6	6.4	9.4	4.7	8.1	12.3	23		4.6	10	3	4.4	1.2	4.6	4,000

RP-M		Insulated cover colour Rosso		Range of cable cross section 0.25 ÷ 1.5 mm²											
tipo	Screw diameter	ØD [mm]	B [mm]	N [mm]	M [mm]	I [mm]	L [mm]	Gross weight [g]	A [mm]	C [mm]	Ø2 [mm]	Ø3 [mm]	Ø [mm]	Cable stripping length [mm]	Unit in standard packaging [pce]
RP-M2	M2	2.2	5.6	2.8	4.5	8.7	17.4	0,630	4.2	10.1	4	5.5	1.8	4.6	3,000
RP-M3	M3	3.2	5.6	2.8	4.5	8.7	17.4	0,577	4.2	10.1	4	5.5	1.8	4.6	3,000
RP-M3.5	M3.5	3.7	5.6	2.8	4.5	8.7	17.4	0,555	4.2	10.1	4	5.5	1.8	4.6	3,000
RP-M3.5/1	M3.5	3.7	6.2	3.1	7.1	11.3	20.2	0,660	4.2	10.1	4	5.5	1.8	4.6	3,000
RP-M4	M4	4.3	7	3.5	6.5	10.7	20.1	0,663	4.2	10.1	4	5.5	1.8	4.6	3,000
RP-M4/3	M4	4.3	7.8	3.9	7.1	11.3	21.1	0,740	4.2	10.1	4	5.5	1.8	4.6	3,000
RP-M5	M5	5.3	7.8	3.9	7.1	11.3	21.1	0,649	4.2	10.1	4	5.5	1.8	4.6	2,500
RP-M6	M6	6.4	9.4	4.7	8.1	12.3	22.9	0,800	4.2	10.1	4	5.5	1.8	4.6	2,500
RP-M6/1	M6	6.4	12	6	10.3	14.5	26.4	1,181	4.2	10.1	4	5.5	1.8	4.6	2,000
RP-M7	M7	7.2	9.4	4.7	8.1	12.3	22.9	0,747	4.2	10.1	4	5.5	1.8	4.6	2,500
RP-M8	M8	8.4	12	6	10.3	14.5	26.4	0,986	4.2	10.1	4	5.5	1.8	4.6	2,500
RP-M10	M10	10.5	15.5	7.75	13.05	17.25	30.9	1,371	4.2	10.1	4	5.5	1.8	4.6	1,500
RP-M12	M12	13	18	9	15.5	19.7	34.6	1,602	4.2	10.1	4	5.5	1.8	4.6	1,500

BP-M		Insulated cover colour Blue		Range of cable cross section 1.5 ÷ 2.5 mm²											
tipo	Screw diameter	ØD [mm]	B [mm]	N [mm]	M [mm]	I [mm]	L [mm]	Gross weight [g]	A [mm]	C [mm]	Ø2 [mm]	Ø3 [mm]	Ø [mm]	Cable stripping length [mm]	Unit in standard packaging [pce]
BP-M2	M2	2.2	5.6	2.8	5	9.2	17.9		4.2	10.1	4.9	6.4	2.4	4.6	2,500

tipo	Screw diameter	ØD [mm]	B [mm]	N [mm]	M [mm]	I [mm]	L [mm]	Gross weight [g]	A [mm]	C [mm]	Ø2 [mm]	Ø3 [mm]	Ø [mm]	Cable stripping length [mm]	Unit in standard packaging [pce]
BP-M3	M3	3.2	5.6	2.8	5	9.2	17.9	0,724	4.2	10.1	4.9	6.4	2.4	4.6	2,500
BP-M3.5	M3.5	3.7	5.6	2.8	5	9.2	17.9	0,691	4.2	10.1	4.9	6.4	2.4	4.6	3,000
BP-M3.5/1	M3.5	3.7	6.2	3.1	6.5	10.7	19.7	0,836	4.2	10.1	4.9	6.4	2.4	4.6	2,500
BP-M4	M4	4.3	8	4	6.5	10.7	20.6	0,846	4.2	10.1	4.9	6.4	2.4	4.6	2,500
BP-M5	M5	5.3	8	4	7.5	11.7	21.6	0,828	4.2	10.1	4.9	6.4	2.4	4.6	2,000
BP-M6	M6	6.4	9.4	4.7	8.6	12.8	23.4	0,923	4.2	10.1	4.9	6.4	2.4	4.6	2,000
BP-M6/1	M6	6.4	12	6	10.3	14.5	26.4	1,276	4.2	10.1	4.9	6.4	2.4	4.6	2,000
BP-M6/2	M6	6.4	8.4	4.2	5.4	9.6	19.7	0,712	4.2	10.1	4.9	6.4	2.4	4.6	2,500
BP-M7	M7	7.2	10	5	7.8	12	22.9	0,881	4.2	10.1	4.9	6.4	2.4	4.6	2,500
BP-M8	M8	8.4	12	6	10.3	14.5	26.4	1,111	4.2	10.1	4.9	6.4	2.4	4.6	1,500
BP-M10	M10	10.5	15.5	7.75	13.05	17.25	30.9	1,467	4.2	10.1	4.9	6.4	2.4	4.6	1,500
BP-M12	M12	13	18	9	15.5	19.7	34.6	1,712	4.2	10.1	4.9	6.4	2.4	4.6	1,000

GP-M Insulated cover colour
Yellow

tipo	Screw diameter	ØD [mm]	B [mm]	N [mm]	M [mm]	I [mm]	Range of cable cross section [mm ²]	L [mm]	Gross weight [g]	A [mm]	C [mm]	Ø2 [mm]	Ø3 [mm]	Ø [mm]	Cable stripping length [mm]	Unit in standard packaging [pce]
GP-M3	M3	3.2	8	4	8.1	14.5	4 ÷ 6	26.2	1,900	6.4	14.1	6.8	8.1	3.6	7	1,000
GP-M3.5	M3.5	3.7	8	4	8.1	14.5	4 ÷ 6	26.2	1,845	6.4	14.1	6.8	8.1	3.6	7	1,000
GP-M4	M4	4.3	9	4.5	8.1	14.5	4 ÷ 6	26.7	1,926	6.4	14.1	6.8	8.1	3.6	7	1,000
GP-M5	M5	5.3	9	4.5	8.1	14.5	4 ÷ 6	26.7	1,872	6.4	14.1	6.8	8.1	3.6	7	1,000
GP-M6	M6	6.4	11	5.5	11.1	17.5	0.25 ÷ 1.5	30.7	2,166	6.4	14.1	6.8	8.1	3.6	7	1,000
GP-M6/1	M6	6.4	11	5.5	8.1	14.5	4 ÷ 6	27.7	2,017	6.4	14.1	6.8	8.1	3.6	7	1,000
GP-M7	M7	7.2	11	5.5	11.1	17.5	4 ÷ 6	30.7	2,111	6.4	14.1	6.8	8.1	3.6	7	1,000
GP-M8	M8	8.4	13.6	6.8	12.1	18.5	4 ÷ 6	33	2,395	6.4	14.1	6.8	8.1	3.6	7	800
GP-M8/1	M8	8.4	11	5.5	8.1	14.5	4 ÷ 6	27.7	1,792	6.4	14.1	6.8	8.1	3.6	7	1,000
GP-M10	M10	10.5	13.6	6.8	12.1	18.5	4 ÷ 6	33	2,154	6.4	14.1	6.8	8.1	3.6	7	1,000
GP-M10/1	M10	10.5	15.5	7.75	13.85	20.25	4 ÷ 6	35.7	2,665	6.4	14.1	6.8	8.1	3.6	7	1,000

tipo	Screw diameter	ØD [mm]	B [mm]	N [mm]	M [mm]	I [mm]	Range of cable cross section [mm ²]	L [mm]	Gross weight [g]	A [mm]	C [mm]	Ø2 [mm]	Ø3 [mm]	Ø [mm]	Cable stripping length [mm]	Unit in standard packaging [pce]
GP-M12	M12	13	19	9.5	15.1	21.5	4 ÷ 6	38.7	3,064	6.4	14.1	6.8	8.1	3.6	7	500
GP-M14	M14	15	21	10.5	16.1	22.5	4 ÷ 6	40.7	3,328	6.4	14.1	6.8	8.1	3.6	7	500
GP-M16	M16	17	24	12	17.1	23.5	4 ÷ 6	43.2	3,780	6.4	14.1	6.8	8.1	3.6	7	500



Via Serenissima, 9 - 25135
Brescia - ITALY